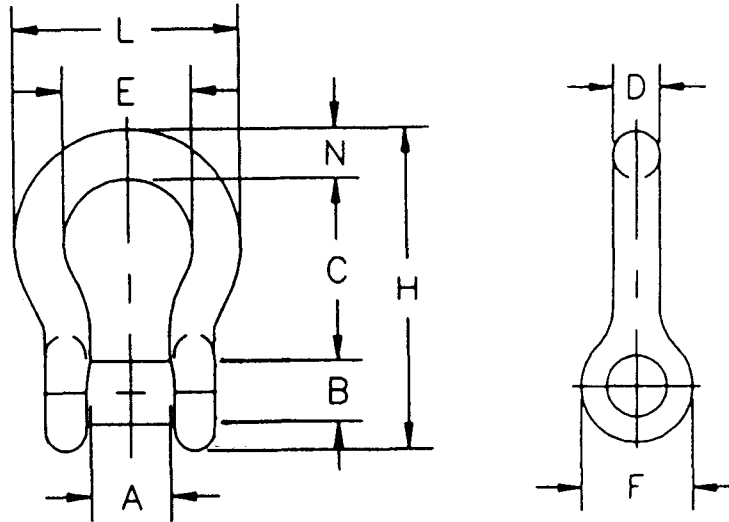


THIS DRAWING AND THE INFORMATION IS THE SOLE PROPERTY OF ROVSCO, INC. AND SHOULD NOT BE REPRODUCED OR COPIED WITHOUT THE PRIOR WRITTEN AND SIGNED CONSENT OF AN OFFICER OF ROVSCO, INC.



All Dimensions are in inches, unless otherwise stated

ROV SHACKLE WORKING LOAD LIMIT (Short Ton)	A	C	D	E	F	H	L	N	MAIN LIFT PIN DIAMETER (B) inch (mm)
8-1/2 Ton	1.69	3.75	1.00	2.69	2.38	6.56	4.69	1.06	1.13 (28.70)
9-1/2 Ton	1.81	4.25	1.13	2.91	2.69	7.47	5.16	1.25	1.25 (31.75)
13-1/2 Ton	2.25	5.25	1.38	3.63	3.31	9.16	6.38	1.50	1.50 (38.10)
17 Ton	2.38	5.75	1.50	3.88	3.63	10.00	6.88	1.62	1.63 (41.40)
25 Ton	2.88	7.00	1.75	5.00	4.19	12.34	8.86	2.25	2.00 (50.80)
35 Ton	3.25	7.75	2.00	5.75	4.81	13.68	9.97	2.40	2.25 (57.15)
55 Ton	4.13	10.50	2.62	7.25	5.69	17.84	12.87	3.13	2.75 (69.85)
85 Ton	5.00	13.00	3.00	7.88	6.50	21.50	14.36	3.62	3.25 (82.55)
120 Ton	5.25	14.63	3.62	9.00	8.00	24.63	16.50	4.12	3.75 (95.25)
150 Ton	5.50	14.50	4.10	10.00	9.00	25.69	18.42	4.56	4.25 (107.95)

				TOLERANCE (UNLESS OTHERWISE STATED)		MATERIAL		DRAWN IH		ROVSCO, Inc. 5263 BARKER CYPRESS RD SUITE 600 HOUSTON, TEXAS 77084 USA TEL: +1-281-858-6333 FAX: +1-281-858-6363		ITEM QREL and QRET	
				3 DEC. PLCS +/- 0.005				DATE				TITLE ROV Shackle Dimensions	
				2 DEC. PLCS +/- 0.010				APPROV. SA				DWG NO: 78602	
RECORD OF REVISIONS								DATE				REV.	