



INNOVATIVE DESIGN ENGINEERING



HLK-90200 Power Pack:

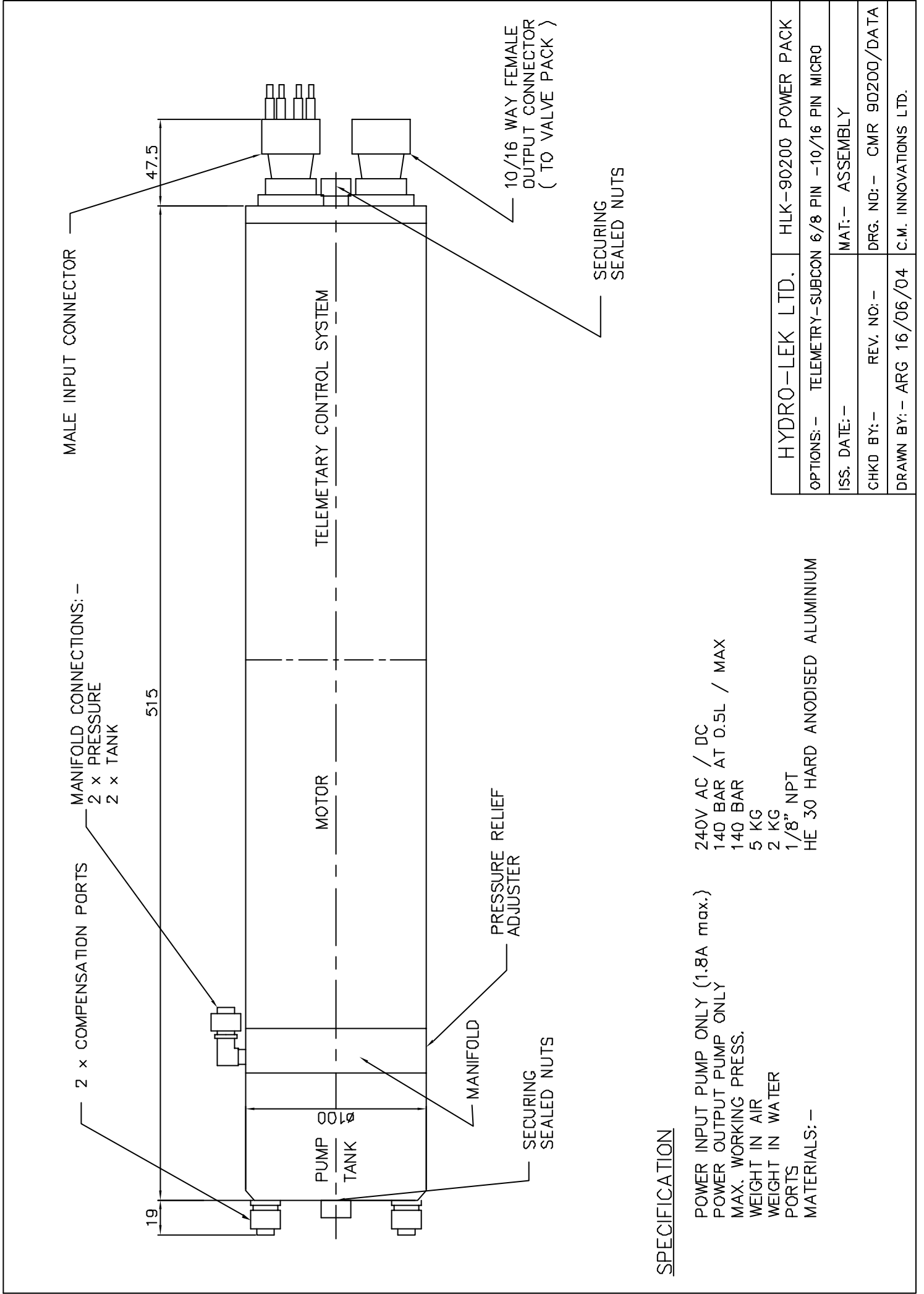
The HLK-90200 Power Pack is a medium pressure low flow unit which incorporates pressure and flow control in the manifold which also acts as the mount plate for the gear pump and reservoir, high pressure shaft seal and electric motor/gear drive set. The motor is kept in a one atmosphere, 100mm dia housing. The shaft seal is dynamically tested to 350 bar. The motor housing can be made longer to accommodate a telemetry control system.

Specification:

Dimensions	Housing length (Standard)	315mm
	Housing length (Telemetry)	515mm
	NB Length can vary to accommodate additional control functions	
	Housing diameter	100mm
Weight	Standard weight in air	5Kg
	Standard weight in water	2Kg
Power	Input pump only (1.8A max)	240V AC/DC
	Output pump only	140 bar at 0.5L/min
Ports		1/8NPT
Construction	HE 30 Hard anodised aluminium	

Hydro-Lek Ltd. Unit 4 Weller Drive Hogwood Lane Ind. Estate Finchampstead Berks. U.K. RG40 4QZ
Telephone: +44(0) 118 9736903 Fax: +44(0) 118 9736915

Web Site <http://www.hydro-lek.com> Email: enquiries@hydro-lek.com



SPECIFICATION

POWER INPUT PUMP ONLY (1.8A max.)
 POWER OUTPUT PUMP ONLY
 MAX. WORKING PRESS.
 WEIGHT IN AIR
 WEIGHT IN WATER
 PORTS
 MATERIALS: -

240V AC / DC
 140 BAR AT 0.5L / MAX
 140 BAR
 5 KG
 2 KG
 1/8" NPT
 HE 30 HARD ANODISED ALUMINIUM

HYDRO-LEK LTD.	HLK-90200 POWER PACK
OPTIONS: -	TELEMETRY-SUBCON 6/8 PIN -10/16 PIN MICRO
ISS. DATE: -	MAT: - ASSEMBLY
CHKD BY: -	REV. NO: -
DRAWN BY: - ARG 16/06/04	DRG. NO: - CMR 90200/DATA
	C.M. INNOVATIONS LTD.