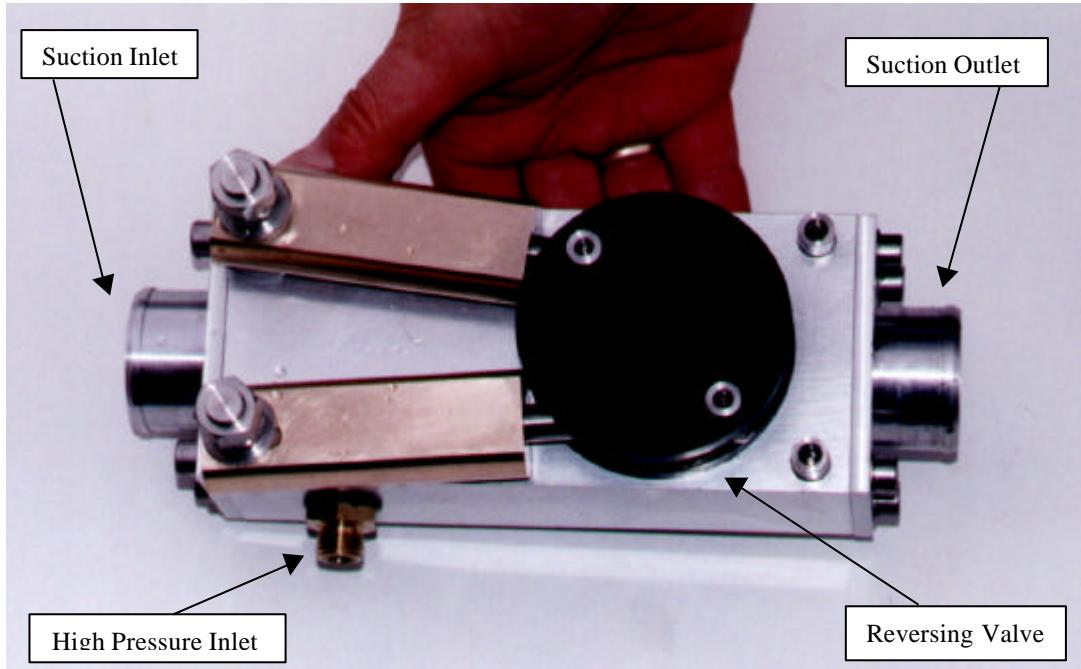




INNOVATIVE DESIGN ENGINEERING



### HLK-3150 Suction Pump:

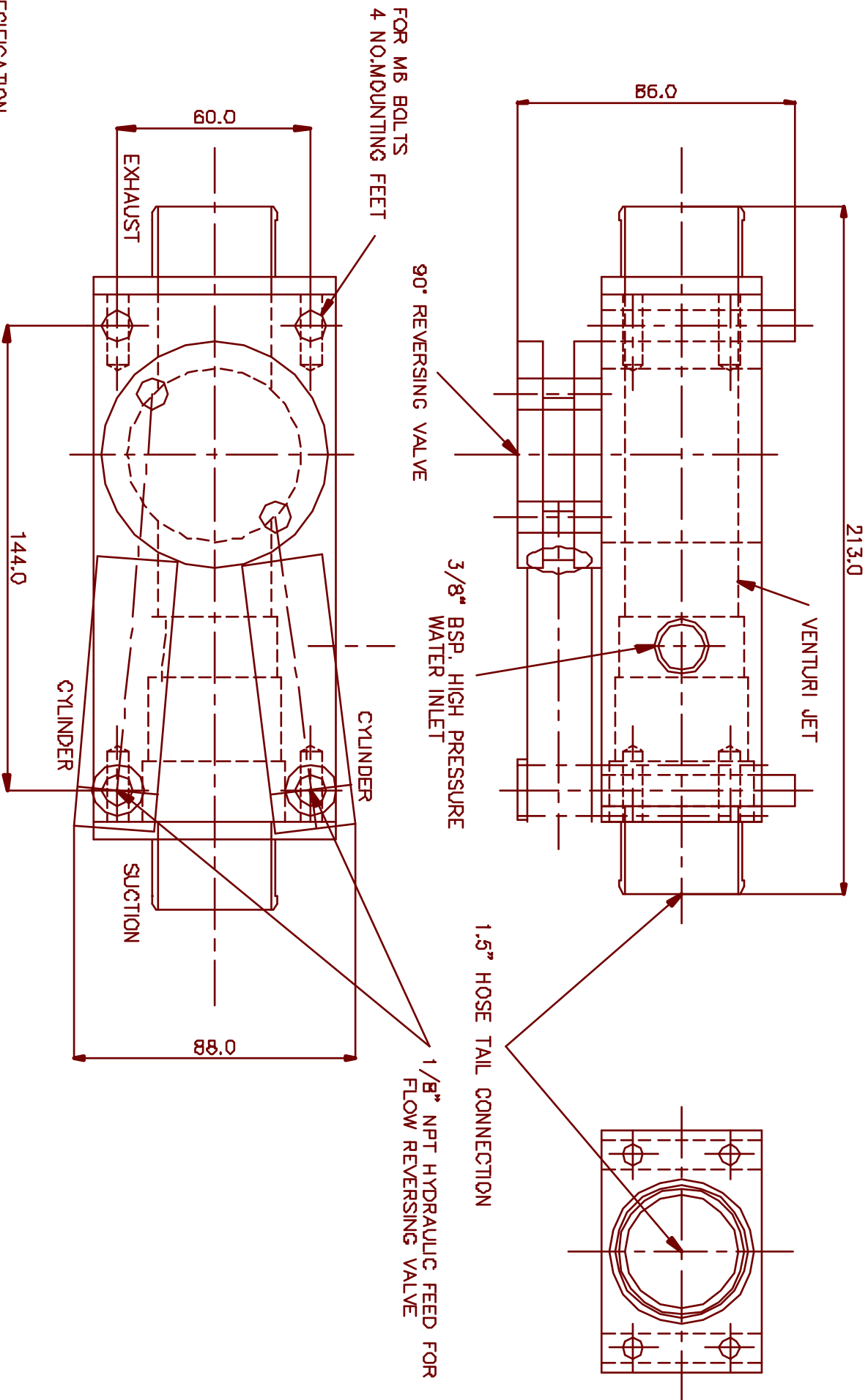
The HLK-3150 Suction Pump is a Venturri device which can be driven from the HLK-3100 water jet pump or similar water supply. It is very compact and is fitted with a reversing valve to enable flows in both directions. Its output performance is dependant on the flow delivered by the separate water jet supply but typically will deliver 100 litres / minute, for a 9 litre / minute input from the pressure source, to a maximum head of 2 - 3 metres. Light weight only 1.6Kg in water.

#### Specification:

|                 |                               |   |
|-----------------|-------------------------------|---|
| Dimensions      | Overall Length                | 220mm   |
|                 | Width                         | 90mm  |
|                 | Height                        | 100mm   |
| Water Jet Input |                               | 9 Litres/min @ 120 Bar  |
| Output          |                               | Max Head 2.8 Metres Static<br>Flow 100 Litres/min (4.5 M <sup>3</sup> /min) |
| Weight          | Weight in air                 | 2.0Kg   |
|                 | Weight in water               | 1.6Kg   |
| Construction    | 316 SS                        |   |
|                 | HE 30 Hard anodised aluminium |   |

Hydro-Lek Ltd. Unit 4 Weller Drive Hogwood Lane Ind. Estate Finchampstead Berks. U.K. RG40 4QZ  
Telephone: +44(0) 118 9736903 Fax: +44(0) 118 9736915

Web Site <http://www.hydro-lek.com> Email: [enquiries@hydro-lek.com](mailto:enquiries@hydro-lek.com)



FOR M8 BOLTS  
4 NOMOUNTING FEET

**SPECIFICATION**

JET INPUT PUMP OUTPUT  
 TOTAL WEIGHT IN AIR 2.0 KG  
 TOTAL WEIGHT IN WATER 1.6 KG  
 MATERIALS: - HE 30 HARD ANODISED ALUMINIUM

9L / MIN @ 120 BAR  
 MAX. HEAD 2.8M STATIC  
 FLOW 100 litres/MIN.(4.5 CU. M/MIN.)

|                       |          |                       |               |
|-----------------------|----------|-----------------------|---------------|
| HYDRO-LEK LTD.        |          | HLK-3150 SUCTION PUMP |               |
| ISS. DATE:-           |          | MAT:-                 |               |
| CHKD BY:-             | REV NO - | DRG NO:-              | CMR 3150/DATA |
| DRAWN BY:- JW 29/9/99 |          | G.M. INNOVATIONS LTD. |               |