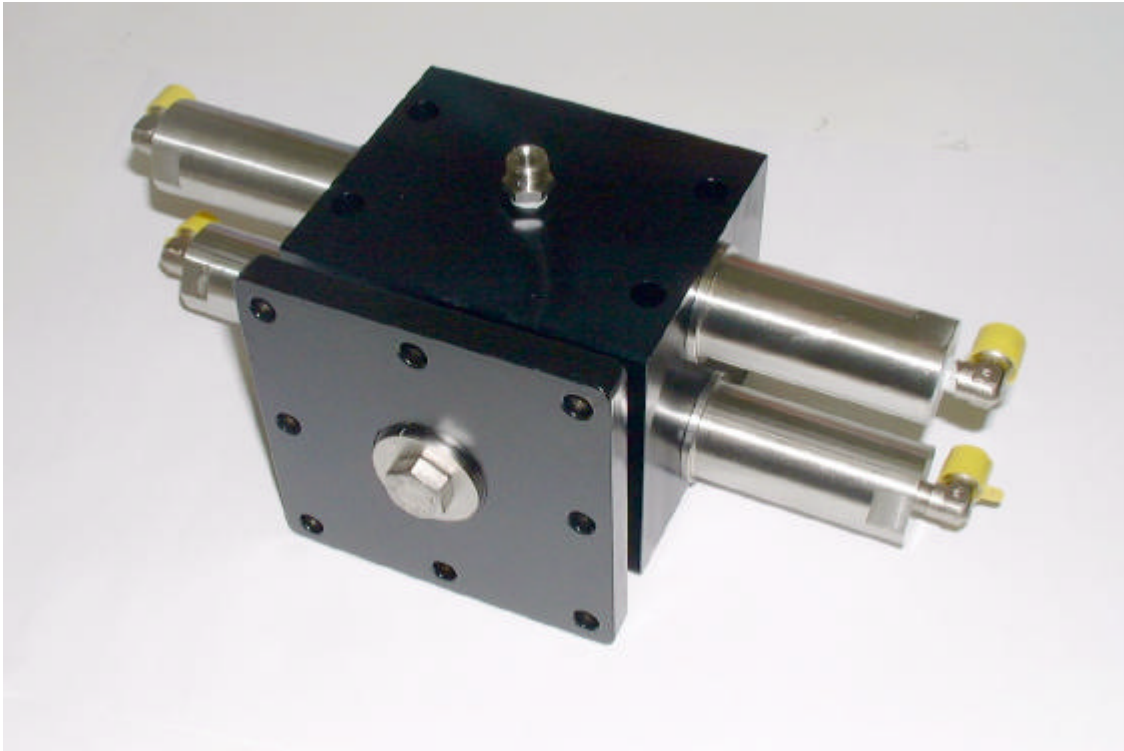




INNOVATIVE DESIGN ENGINEERING



HLK-2260 180° Heavy Duty Rotary Actuator:

The HLK-2260 Heavy Duty Rotary Actuator is designed to rotate manipulator arms to enable a rotating access for inspection and positioning tasks. Different mounting plates can be fitted to accommodate a range of mounting styles. The double rack and pinion ensures a very robust arrangement, which has the minimum of backlash.

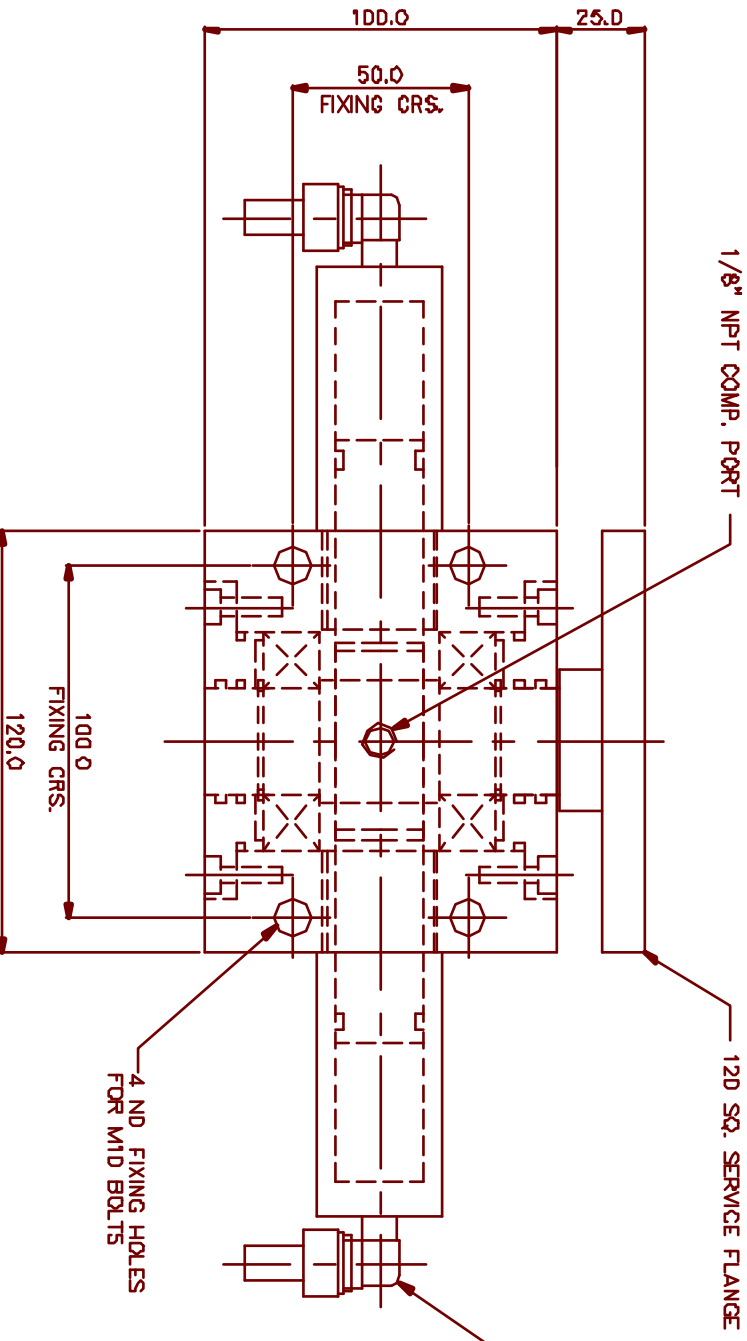
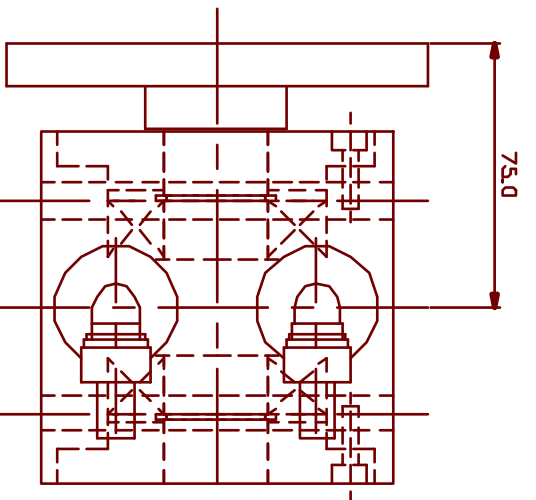
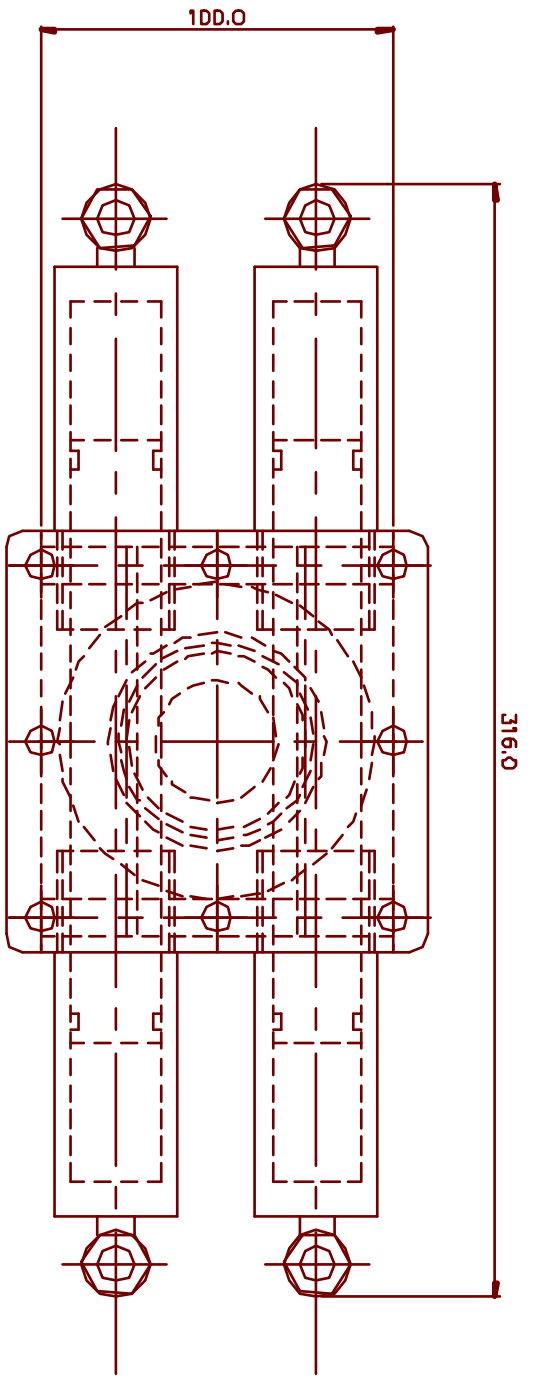
Specification:

Dimensions	Height	100 mm (excluding arm mount)
	Width	290 mm
	Depth	125 mm
Function	Rotation	180°
Weight	Weight in air	6.7 Kg
	Weight in water	5.4 Kg
Material	316 SS	
	HE 30 Hard anodised aluminium alloy	
Hydraulics	Pan torque	260 NM @ 140 BAR
	Max working pressure	210 bar
Ports		1/8 NPT

Hydro-Lek Ltd. Unit 4 Weller Drive Hogwood Lane Ind. Estate Finchampstead Berks. U.K. RG40 4QZ

Telephone: +44(0) 118 9736903 Fax: +44(0) 118 9736915

Web Site <http://www.hydro-lek.com> Email: enquiries@hydro-lek.com



SPECIFICATION

PAN ANGLE 180°
 MAX. WORKING PRESS. 210 BAR
 PAN TORQUE 260Nm @ 140 BAR
 OVERALL HEIGHT 125
 OVERALL WIDTH 316
 WEIGHT IN AIR 6.7 KG
 WEIGHT IN WATER 5.4 KG
 PORTS 1/8" NPT
 MATERIALS:- HE 30 ALUMINIUM
 316 ST. STEEL

HYDRO-LEK LTD		H.D. ROTARY ACTUATOR	
ISS. DATE:-	MAT:-	VARIOUS	
CHKD BY:-	REV. NO.:-	DRG. NR:-	CMR 2260/DATA
DRAWN BY:- JW 10/10/00		CM. INNOVATIONS LTD.	