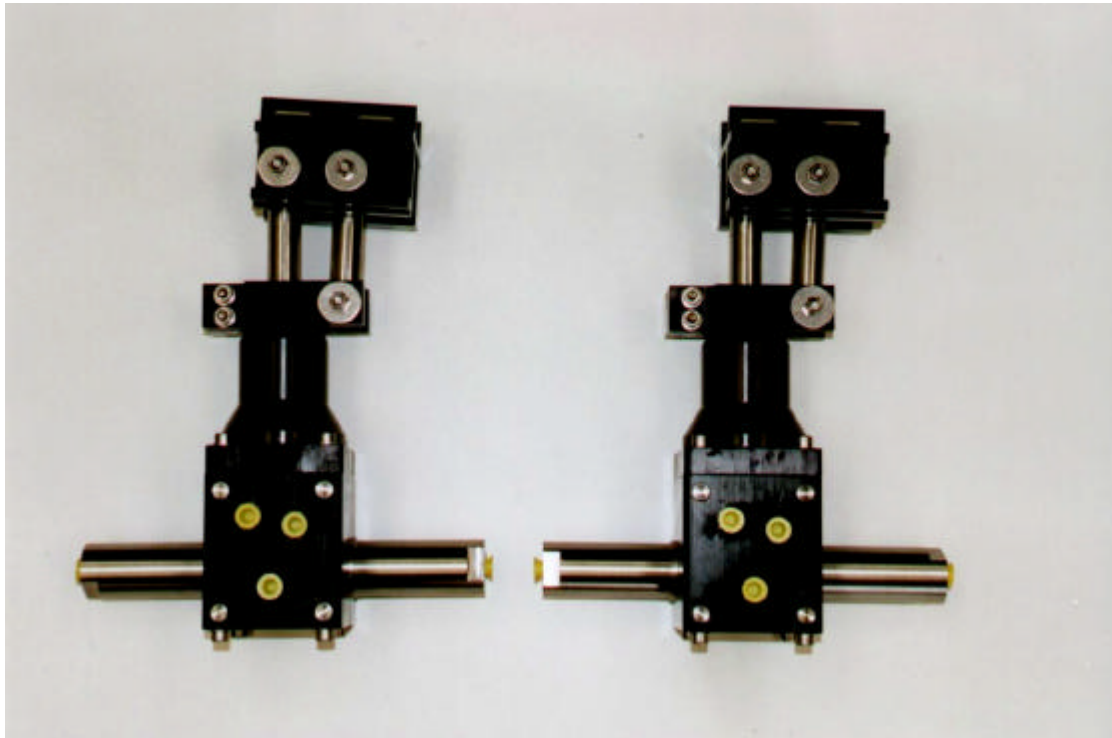




**INNOVATIVE DESIGN ENGINEERING**



**HLK-2150 Pan & Tilt:**

The HLK-2150 Pan & Tilt is now considered to be one of the longest serving reliable units in service. Its unique slip ring and tilt action ensures the camera swept arc is kept to a minimum. Since serial number 360 a new adjustable camera tilt clamp system has been used to improve rigidity. A retro fit kit to upgrade all previous models is also available.

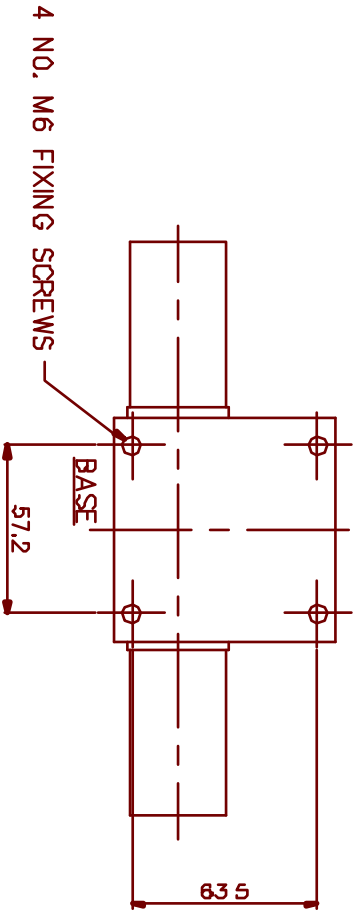
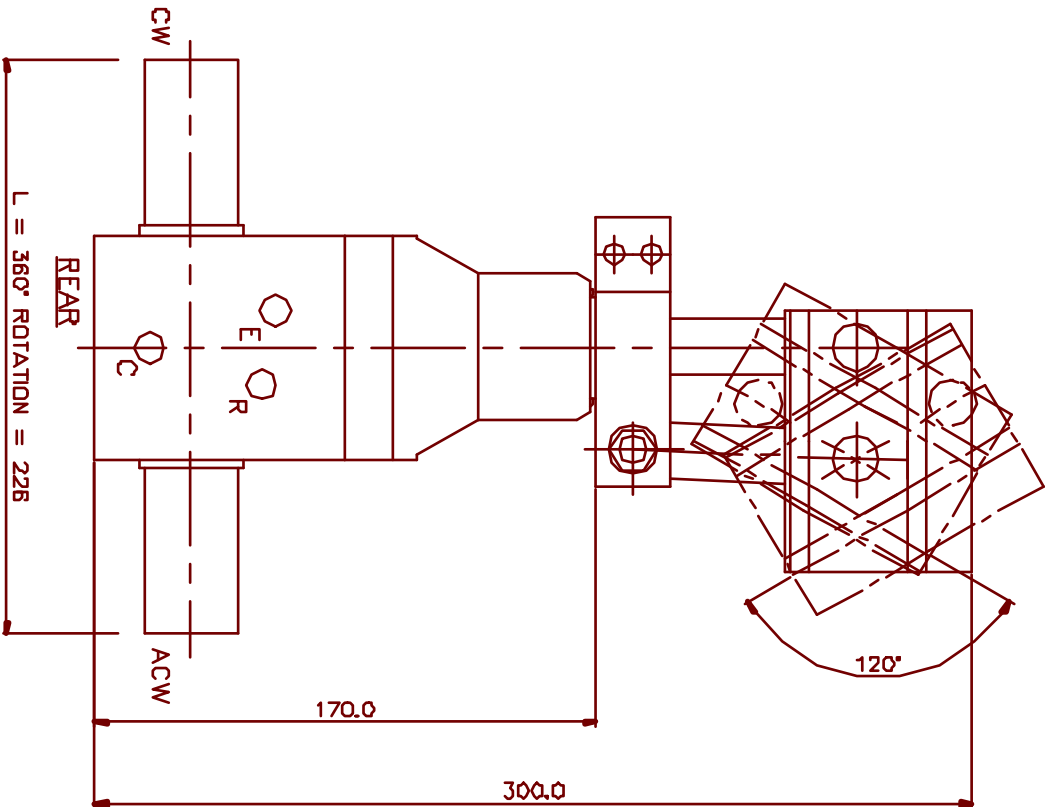
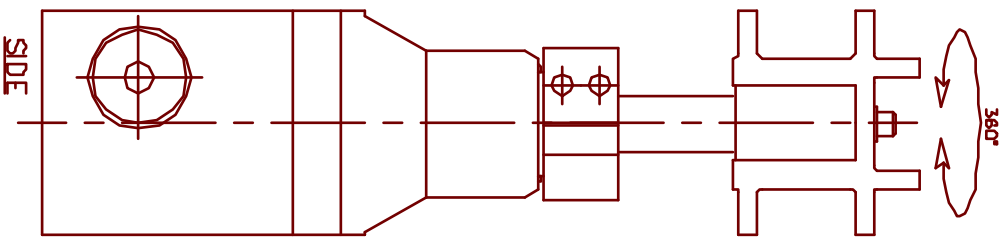
**Specification:**

<b>Dimensions</b>	<b>Height</b>	<b>300mm</b>
	<b>Width (360° rotation)</b>	<b>226mm</b>
	<b>Depth</b>	<b>76mm</b>
<b>Function</b>	<b>Tilt</b>	<b>120°</b>
	<b>Pan</b>	<b>360° max</b>
<b>Weight</b>	<b>Weight in air</b>	<b>4.5Kg</b>
	<b>Weight in water</b>	<b>3.3Kg</b>
<b>Material</b>	<b>316 SS</b>	
	<b>HE 30 Hard anodised aluminium</b>	
<b>Hydraulics</b>	<b>Max working pressure</b>	<b>210 bar</b>
<b>Ports</b>		<b>7/16 SAE / 1/8 NPT</b>

Hydro-Lek Ltd. Unit 4 Weller Drive Hogwood Lane Ind. Estate Finchampstead Berks. U.K. RG40 4QZ

Telephone: +44(0) 118 9736903 Fax: +44(0) 118 9736915

Web Site <http://www.hydro-lek.com> Email: [enquiries@hydro-lek.com](mailto:enquiries@hydro-lek.com)



**PORTS**

E = TILT EXTEND  
 R = TILT RETRACT  
 C = COMPENSATION  
 CW = PAN CLOCKWISE  
 ACW = PAN C/CLOCKWISE

**SPECIFICATION**

PAN ANGLE 360°  
 TILT ANGLE 120°  
 MAX. WORKING PRESS 210 BAR  
 PAN TORQUE 100 NM  
 TILT TORQUE 120 NM  
 OVERALL HEIGHT 300  
 OVERALL WIDTH 228  
 WEIGHT IN AIR 4.5 KG  
 WEIGHT IN WATER 3.3 KG  
 PORTS 1/8" NPT - 7/16" SAE  
 MATERIALS:- HE 30 ALUMINIUM  
 316 ST. STEEL

HYDRO-LEK LTD	HLK-2150 PAN AND TILT UNIT
ISS. DATE: -	MAT. - VARIOUS
CHKD BY - REV NO: -	DRG. NO: - CMR 2150/DATA
DRAWN BY: - JW 18/8/99	C.M. INNOVATIONS LTD.