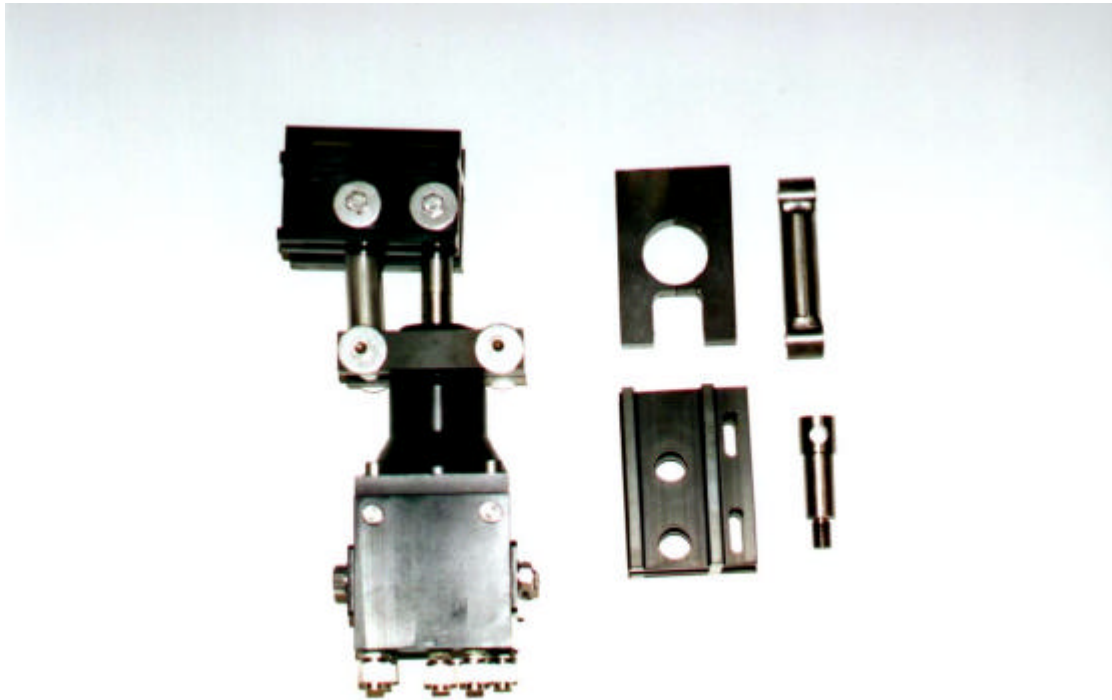




INNOVATIVE DESIGN ENGINEERING



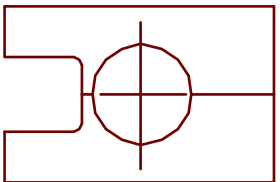
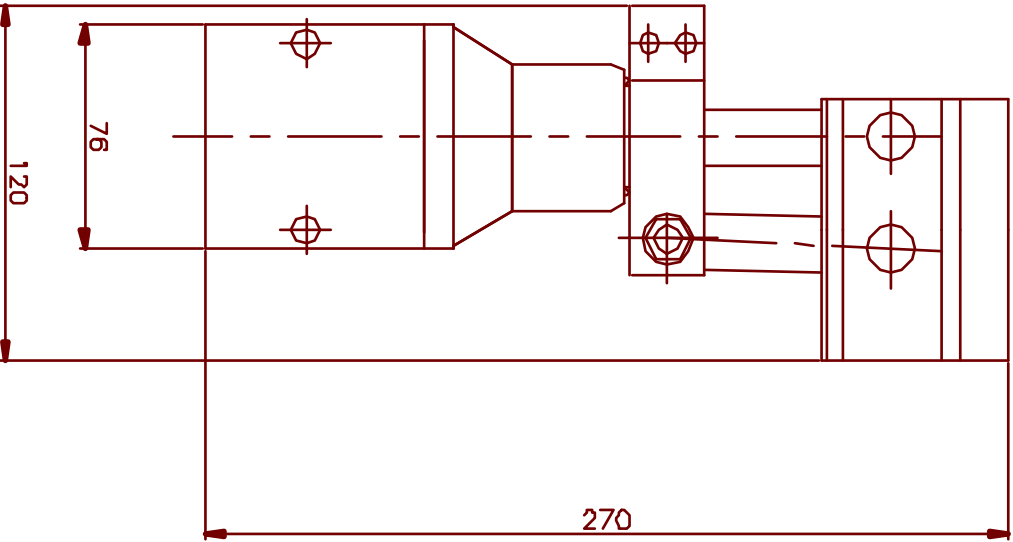
HLK-2010C Camera Conversion Kit:

The HLK-2010C Camera Conversion Kit enables the 2010 Jaw Assembly to be converted to a simple Pan & Tilt, without the need to change hydraulic circuits. It comprises of a jaw clamp extension shaft, lazy arm and Pan & Tilt camera bracket. It can be used on either the 2010 or 2020 Jaw Actuator to convert any arm to an inspection camera platform.

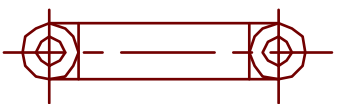
Specification:

Dimensions	Length	260mm
	Width	120mm
	Height	75mm
Function	Pan	180° / Continuous
	Tilt	60°
Weight	Weight in air	3.5Kg
	Weight in water	2.75Kg
Construction	316 SS	
	HE 30 Hard anodised aluminium	
Hydraulics	Max working pressure	210 bar
Ports		1/8 NPT

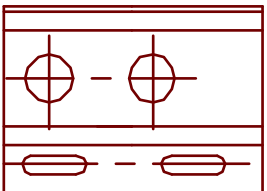
Hydro-Lek Ltd. Unit 4 Weller Drive Hogwood Lane Ind. Estate Finchampstead Berks. U.K. RG40 4QZ
Telephone: +44(0) 118 9736903 Fax: +44(0) 118 9736915
Web Site <http://www.hydro-lek.com> Email: enquiries@hydro-lek.com



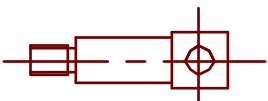
CLAMP



TILT SHAFT



CAMERA BRACKET



PAN SHAFT

SPECIFICATION

PAN ANGLE	180°
TILT ANGLE	60°
MAX. WORKING PRESS	210 BAR
WEIGHT IN AIR	3.5 Kg
WEIGHT IN WATER	2.75 Kg
PORTS	1/8" NPT
MATERIALS:-	HE 30 HARD ANODISED ALUMINIUM 316 ST. STEEL

HYDR0-LEK LTD	HLK-2010C CAMERA CONVERSION KIT
ISS. DATE:-	MAT. - VARIOUS
CHKD BY - REV NO:-	DRG. NO. - CMR 2010C/DATA
DRAWN BY:- JW 24/8/99	C.M. INNOVATIONS LTD.