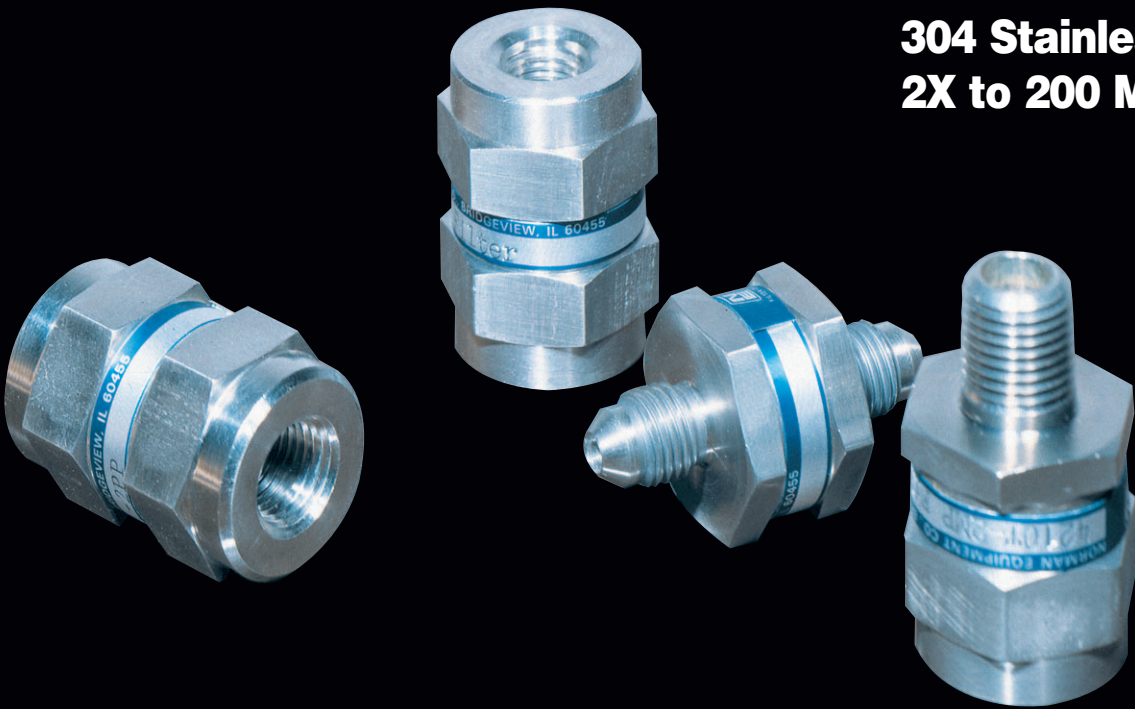


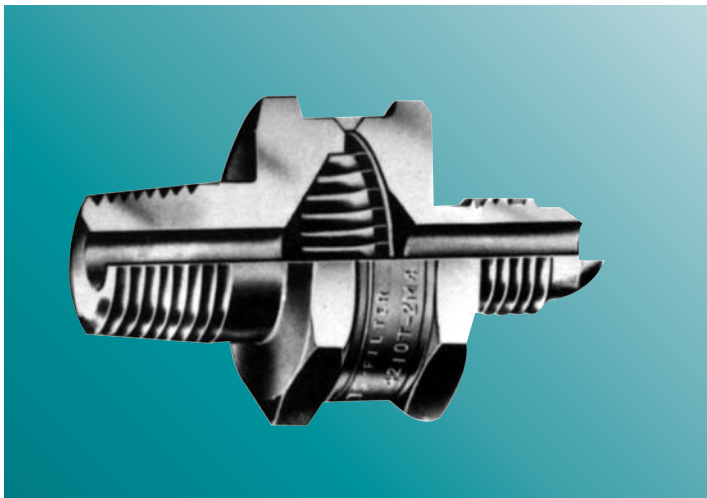
# **Norman 4200 Series In-Line Filters Up to 5 gpm**

**6000 psi**

**Proof Pressure 9000 psi  
Burst Pressure 24,000 psig  
304 Stainless Steel  
2X to 200 Microns**



**NORMAN FILTER COMPANY, L.L.C.**  
**PHONE: 708-233-5521 • FAX: 708-430-5961**



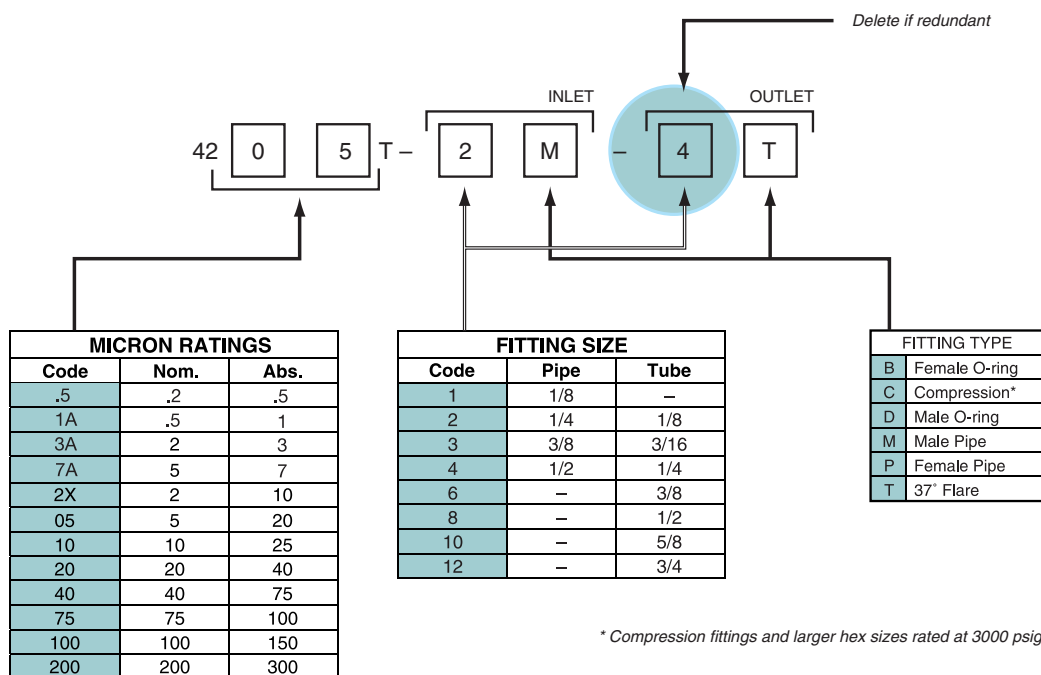
# Norman 4200 Series 6000 psi In-Line Recleanable Stainless Steel Filters

Norman 4200 Series In-Line Filters provide a compact lightweight In-Line filter for reliable economic protection of critical components.

## FEATURES:

- **POSITIVE PROTECTION** – 304 Stainless Steel “Microweave” filter element has controlled pore size for precise contaminant removal from 2 to 200 microns. The 316 Sintered Stainless Steel Media can remove particles down to .5 micron absolute.
- **EXTENDED SERVICE LIFE** – The pleated 304 Stainless Steel element design has much greater surface area and dirt holding capacity than simple flat discs.
- **CHOICE OF END FITTINGS** – “Mix-and-Match” male and female connections – pipe thread, flared tube, compression fitting and SAE O-Ring – to adapt to your installation.
- **EXCELLENT TEMPERATURE AND CORROSION RESISTANCE** – All stainless steel construction is suitable for virtually any fluid at temperatures of -320° F to + 800° F. (6000 psi rating at 70° F.)
- **NO MEDIA MIGRATION** – Unlike felt media, the continuous strands of high-strength stainless steel wire mesh are welded to the housing to prevent downstream contamination.

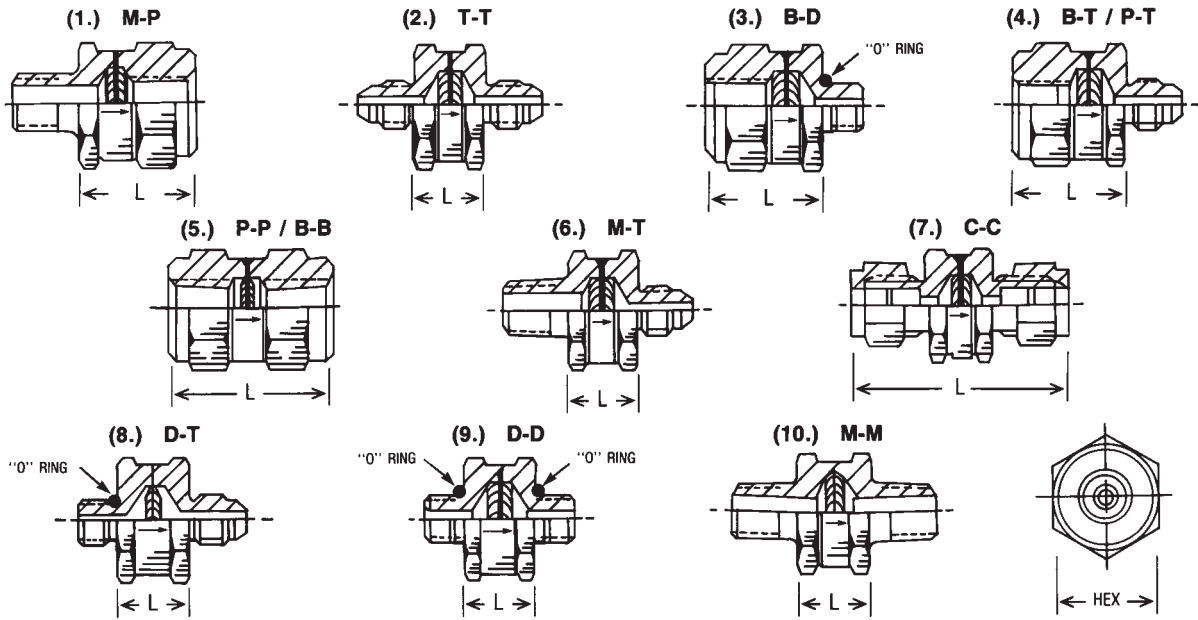
## HOW TO ORDER 4200 SERIES MINI IN-LINE FILTERS Stainless Steel, Welded, 6000 PSI\*



\* Compression fittings and larger hex sizes rated at 3000 psig.



4200 Series filters are available in a variety of end connections and hex sizes:



## SPECIFICATIONS

SERIES	HEX SIZE	LENGTH	INLET	OUTLET	FIGURE	PRESSURE PSIG	SERIES	HEX SIZE	LENGTH	INLET	OUTLET	FIGURE	PRESSURE PSIG
42 ___ T-1MP	1"	1.10	1/8" Male Pipe	1/8" Female Pipe	1	6000	42 ___ T-4CC	1"	2.21	1/4" Compression	1/4" Compression	7	3000
42 ___ T-1M-4T	1"	0.68	1/8" Male Pipe	1/4" Flare	6	6000	42 ___ T-4DD	1"	1.10	1/4" Male O-Ring	1/4" Male O-Ring	9	6000
42 ___ T-1PP	1"	1.58	1/8" Female Pipe	1/8" Female Pipe	5	6000	42 ___ T-4DT	1"	1.10	1/4" Male O-Ring	1/4" Flare	8	6000
42 ___ T-2CC	1"	2.02	1/8" Compression	1/8" Compression	7	3000	42 ___ T-4MM	1 3/4"	1.42	1/2" Male Pipe	1/2" Male Pipe	10	3000
42 ___ T-2MM	1"	0.68	1/4" Male Pipe	1/4" Male Pipe	10	6000	42 ___ T-4PP	1"	1.58	1/2" Female Pipe	1/2" Female Pipe	5	3000
42 ___ T-2MP	1"	1.10	1/4" Male Pipe	1/4" Female Pipe	1	6000	42 ___ T-4TT	1"	0.68	1/4" Flare	1/4" Flare	2	6000
42 ___ T-2M-4T	1"	0.68	1/4" Male Pipe	1/4" Flare	6	6000	42 ___ T-6CC	1"	2.37	3/8" Compression	3/8" Compression	7	3000
42 ___ T-2M-6T	1"	0.68	1/4" Male Pipe	3/8" Flare	6	6000	42 ___ T-6DD	1"	0.80	3/8" Male O-Ring	3/8" Male O-Ring	9	6000
42 ___ T-2PP	1"	1.58	1/4" Female Pipe	1/4" Female Pipe	5	6000	42 ___ T-6DT	1"	0.80	3/8" Male O-Ring	3/8" Flare	8	6000
42 ___ T-2P-4T	1"	1.10	1/4" Female Pipe	1/4" Flare	4	6000	42 ___ T-6TT	1"	0.80	3/8" Flare	3/8" Flare	2	6000
42 ___ T-2TT	1"	0.68	3/8" Flare	3/8" Flare	2	6000	42 ___ T-8BB	1 3/8"	2.00	1/2" Female O-Ring	1/2" Female O-Ring	5	3000
42 ___ T-3PP	1 3/8"	1.58	3/8" Female Pipe	3/8" Female Pipe	5	3000	42 ___ T-8DD	1 3/8"	0.74	1/2" Male O-Ring	1/2" Male O-Ring	9	3000
42 ___ T-3TT	1"	.68	3/16" Flare	3/16" Flare	2	6000	42 ___ T-8DT	1 3/8"	0.74	1/2" Male O-Ring	1/2" Flare	8	3000
42 ___ T-4BB	1"	1.55	1/4" Female O-Ring	1/4" Female O-Ring	5	6000	42 ___ T-8TT	1 3/8"	0.74	1/2" Flare	1/2" Flare	2	3000
42 ___ T-4BD	1"	1.10	1/4" Female O-Ring	1/4" Male O-Ring	3	6000	42 ___ T-10TT	1 3/4"	1.42	3/8" Flare	3/8" Flare	2	3000
42 ___ T-4BT	1"	1.10	1/4" Female O-Ring	1/4" Flare	4	6000	42 ___ T-12TT	1 3/4"	1.42	3/4" Flare	3/4" Flare	2	3000

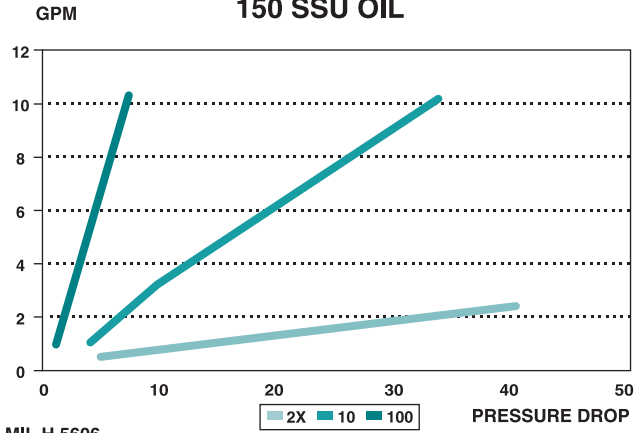
\*NOTE: Flow can be in either direction. Example – 422XT-2M may be changed to 422XT-4T-2M if a male tube inlet/male pipe outlet is required.

## ECONOMICAL PROTECTION FOR:

- Hydraulic Systems
- Pilot Circuits
- Gauges
- Meters
- Transducers
- Relief Valves
- Chemical Procession
- Water Filtration
- Pneumatic Lines
- Test Stands
- Laboratories
- Cryogenics

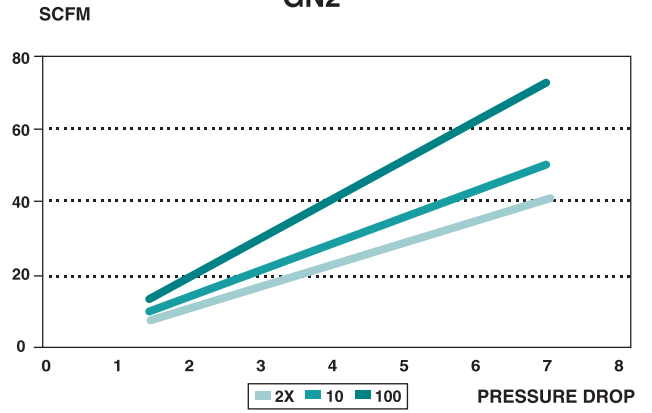


## 1/4" NPT 150 SSU OIL

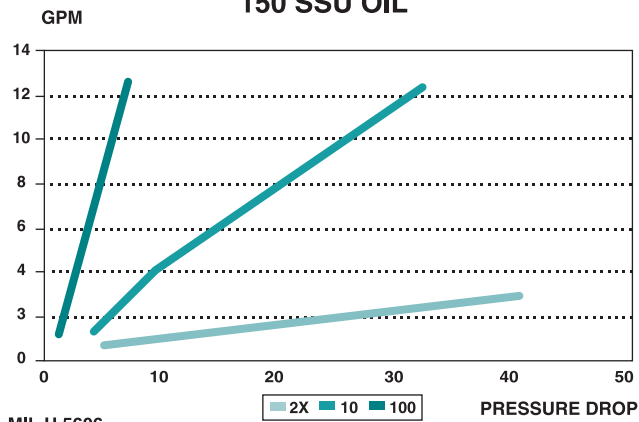


MIL H 5606

## 1/4" NPT GN2

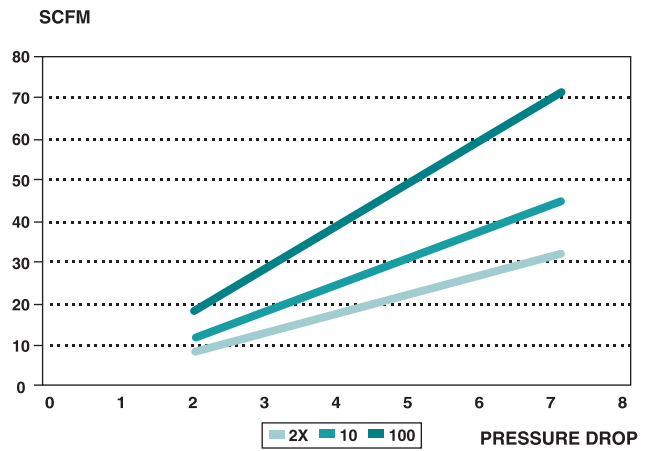


## 1/4" SAE 150 SSU OIL

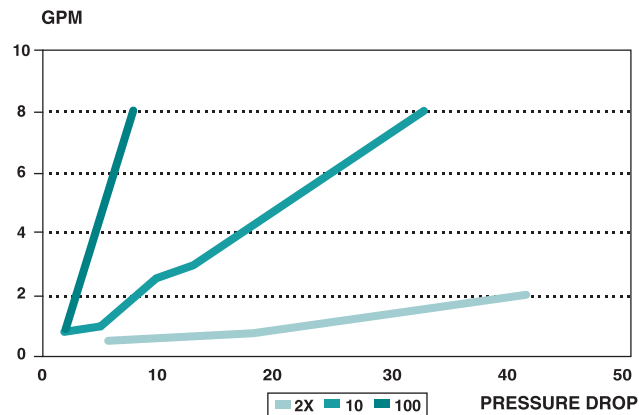


MIL H 5606

## 1/4" SAE GN2

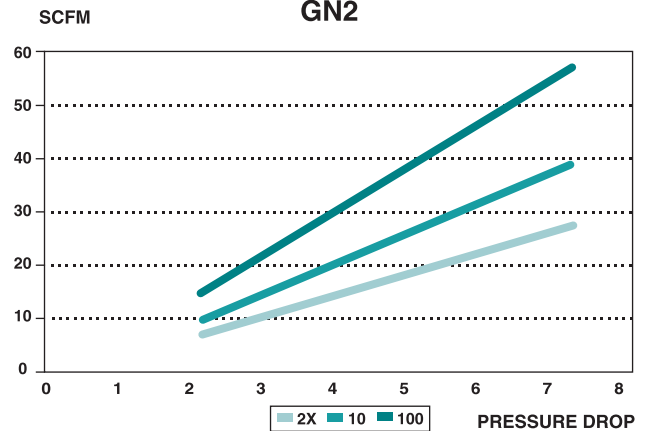


## 1/4" 37 JIC FLARE 150 SSU OIL



MIL H 5606

## 1/4" 37 JIC FLARE GN2



**NORMAN FILTER COMPANY, L.L.C.**  
 9850 SOUTH INDUSTRIAL DRIVE  
 BRIDGEVIEW, ILLINOIS 60455  
 PHONE: 708-233-5521  
 IN U.S.: 800-207-6045  
 FAX: 708-430-5961  
 EMAIL: NORMANFILTERS@ATT.NET  
 WWW.NORMANFILTERS.COM

DISTRIBUTED BY: